



# The PIPELINE

## 2nd Quarter in Review

We have completed the 2<sup>nd</sup> quarter with a **BANG** as the 2016-2017 school year has come to a close and we are gearing up for the summer! To close out the school year, cookie trays were taken to the schools The P.A.T. Center is stationed in, to say “Thank You” for allowing us to be of service, in hopes to return 2017-2018 school term.

Mid April, we expanded in the Credible family and added the Credible Care App to our technology. This app is an ideal companion that will be used in addition to the already utilized Credible domain, in our EMR system. The app allows staff, who does not have access to Wi-Fi, such as when in rural areas, to still have access to clients on their schedules. *The Credible Care app went live May 2017!*

May 2017, Leadership attended numerous meetings to obtain information about the upcoming Medicaid changes. On May 12, Leadership attended a HUDDLE meeting and May 15, a P.A.S.S.E. meeting, both in Little Rock, AR. Also during the month of May, The PAT Center had a Retrospective Audit completed and no deficiencies found for charts reviewed for Ms. Thompkins! WAY TO GO!!!!

The PAT Center hosted an MHP Recruitment Luncheon in May 15 in the PB location and May 16 in the Little Rock location. The luncheons were advertised in both cities and invited persons who have graduated with a Master’s or would soon graduate, to come and obtain information about the agency and the services provided. Lunch was provided to attendees.

June 2017, was busy as ever! Our Clinical Director, Mrs. Johnson, represented the agency, June 2, at the PCSSD Mental Health Provider Presentation Day. June 14, the Advisory Board met to review the previous quarter and discuss current quarter.

June 22, PAT Staff attends the Beacon Health Stakeholder Meeting.

### Contents

Quarter in Review	1
Upcoming Events	2
Events from 2 <sup>nd</sup> Quarter	2
Staff Additions	2
Quarterly Survey Feedback	3
Employment	4

*“We are your first choice mental health care provider, serving as an advocate, facilitator, and friend. We ensure your success in getting your life and family in order by supporting you every step of the way, so together, we can build better Arkansas communities for a better tomorrow.”*

# Upcoming Events

Mark  
Your  
Calendar

## July

- 7/1-Medicaid Changes Began
- 7/4-Independence Day
- Annual PAT Center Picnic

## August

- 8/21-Start of 2017-2018 school year
- PI/QA Meeting

## September

- 9/4-Labor Day
- Advisory Board Meeting
- 9/20-Domanin 1 @ ASACB Conference in Jonesboro

### Additional Events from 2nd Quarter:

- April:**
- \*Beacon Health Quarterly Webinar
  - \*National Assoc. of Social Worker's Conf.
  - \*UAMS Training
  - \*PB Chamber of Commerce Fair (PB Con. Ctr)
  - \*Annual Easter Egg Hunt
  - \*Credible App Demo

- May:**
- \* Retrospective audit-GREAT review; congrats Mrs. Thompkins
  - \*CPR & CPI Trainings Conducted
  - \*Lunch Provided by P.A.T. for Nurse's Week
  - \*LRSD Teacher's Appreciation/Teacher of the Year Banquet
  - \*HUDDLE Meeting
  - \*Nat'l Social Worker's Conference

- June:**
- \*PCSSD Presentation
  - \*Advisory Board Meeting
  - \*Pinnacle Lunch 'N' Learn (training)
  - \*Onsite BCBS Training (LR)
  - \*Lighthouse Charter Presentation

Pictured below from Left to Right:

Ronald Kirby, PAT Center, CEO

Chief Ivan Whitfield, PB Police Department

**Picture Description:** (P.A.Y. Camp) Police and Youth Camp Orientation, May 2017



Out & about in the community..

Welcome!!!  
Welcome!!!

Date of Hire: 6/5/17

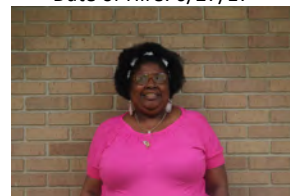


Briana Waits, LR MHP



Aaliysha Brown, PB MHP

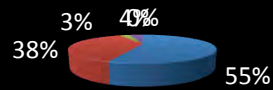
Date of Hire: 6/27/17



Quarterly surveys are completed by adult clients and adolescent client's guardians to rate the services rendered by MHPs, MHPPs and Psychiatrists. This allows The P.A.T. Center to understand/realize what improvements are needed.

### Child/Adolescent/Parent-Psychiatrist

Very Satisfied Satisfied Dissatisfied Very Dissatisfied N/A



Of the adult surveys completed, 89 % were satisfied or very satisfied with MHPP services.  
N=25

### Child/Adolescent/Parent-MHP

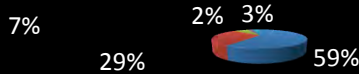
Very Satisfied Satisfied Dissatisfied  
Very Dissatisfied N/A



Of the adult surveys completed, 88 % were satisfied or very satisfied with MHPP services.  
N=24

### Child/Adolescent/Parent-MHP

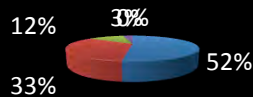
Very Satisfied Satisfied Dissatisfied  
Very Dissatisfied N/A



Of the adult surveys completed, 88 % were satisfied or very satisfied with MHPP services.  
N=24

### Adult Survey-Psychiatrist

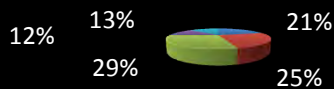
Very Satisfied Satisfied Dissatisfied  
Very Dissatisfied N/A



Of the adult surveys completed, 85 % were satisfied or very satisfied with MHPP services.  
N=29

### Adult-MHPP Survey

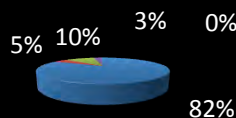
Very Satisfied Satisfied Dissatisfied  
Very Dissatisfied N/A



Of the adult surveys completed, 73 % were satisfied or very satisfied with MHPP services.  
N=2

### Adult-MHP Survey

Very Satisfied Satisfied  
Dissatisfied Very Dissatisfied



Of the adult surveys completed, 86 % were satisfied or very satisfied with MHPP services.  
N=24

# People Advocating Transition

---

620 S. Laurel Street  
Pine Bluff, AR 71601  
870-534-4900  
870-534-4906  
thepatcenter@yahoo.com

Find us on the Web:  
<http://www.peopleadvocatingtransition.com>



---

### ***MHP***

Full-time Mental Health Professionals (MHPs):  
Full-time positions for licensed Therapists for the Little Rock and Pine Bluff areas. Minimum qualifications: Psychologist, LCSW, LMSW, LPE, LPE-I, LPC, LMFT or an APN or CNS with a specialty in psychiatry or mental health.



### ***MHPP***

Full-time Mental Health Para-Professionals (MHPPs): full-time positions for MHPPs for the Little Rock and Pine Bluff areas. Minimum qualifications: Bachelor's degree in social sciences or related field and experience in mental health field preferred.

To apply, please submit a resume, cover letter and list of references via email to [thepatcenter@yahoo.com](mailto:thepatcenter@yahoo.com) or fax (870) 534-4906.